



HID ignitors for series systems

SND 58 220-240V 50/60Hz

HID ignitors for series systems

Product data

• General Characteristics

Application code	58
Rated Lamptype	SON/CDM/MH/HPI/HPA
Rated Number of Lamps	1 piece
Rated Ballast-Lamp Power	35-600
Line Voltage	220-240 V
Line Frequency	50/60 Hz
Housing	SNI-85

• Operating Characteristics

Ignition type	Semi-Parallel
Ignition Attempts	3 -
Maximum ignition time	1185 (max) s
Ignition Voltage	2.8 (min), 5.0 (max) kV
Response voltage	195 V
Mains voltage safety (AC)	-10%/+10%
Mains voltage performance (AC)	-8%/+6%
Power losses gear	1.0 W

• Wiring Characteristics

Connector type	Screw
Wcs Ballast contacts	0.70-2.50 mm ²

• Temperature Characteristics

T-case maximum	90 (max) C
----------------	------------

T-ambient	-20 (min), 85 (max) C
-----------	-----------------------

• Product Dimensions

Length A1	84.5 mm
Fixing Hole Distance	65.0 mm
Length A2	
Width B1	41.5 mm
Height C1	38.5 mm
Fixing Hole Diameter D1	4.3 mm

• Approval & Application Chars

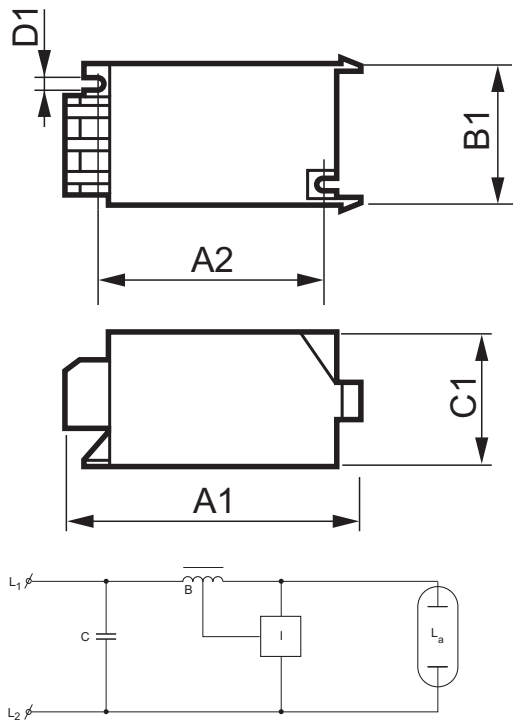
CE marking	Yes
ENEC certificate	Yes

• Product Data

Order code	913700185166
Full product code	913700185166
Full product name	SND 58 220-240V 50/60Hz
Order product name	SND 58 220-240V 50/60Hz
Pieces per pack	1
Packing configuration	48
Packs per outerbox	48
Bar code on pack - EAN1	8711500930682
Bar code on outerbox - EAN3	8711500930699
Logistic code(s) - 12NC	913700185166
Net weight per piece	0.050 kg

PHILIPS

Dimensional drawing



SND 58 220-240V 50/60Hz

Product	A1 (Norm)	A2 (Norm)	B1 (Norm)	C1 (Norm)	D1 (Norm)
SND 58 220-240V 50/60Hz	84.5	65.0	41.5	38.5	4.3



© 2015 Koninklijke Philips N.V. (Royal Philips)
All rights reserved.

Specifications are subject to change without notice. Trademarks are the property of Koninklijke Philips N.V. (Royal Philips) or their respective owners.

www.philips.com/lighting

2015, August 29
data subject to change